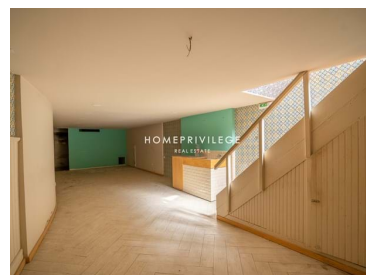
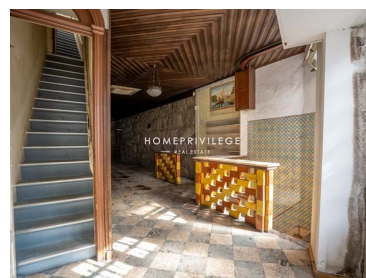





Campanhã - Building



 **10**
Bedrooms

 **541**
Area (m²)

 **167,5**
Land Area (m²)

890 000 €
(EUR €)

Two Buildings for Sale in Campanhã - Porto | Double Investment

Two Buildings for Sale in Campanhã - Porto

A unique double investment opportunity!

Two adjoining buildings for independent use, both totalling 541.00m² of built area, with a plot area of 167.50m² and a deployment area of 152.00m². Both buildings have stonework and tiled façades and wooden floors inside.

Both are fully owned. One building is used as a shop with a history. It has a basement and ground floor, which used to be a restaurant, and the 1st and 2nd floors are used for residential purposes and are now used as shops. The other building comprises a shop on the ground floor, four rooms on the 1st floor and four rooms on the 2nd floor. All three floors have access to a patio, which is used for residential purposes.

Administrador

913587295 ²

geral@homeprivilege.pt

T +351 913 587 295 ² · E geral@homeprivilege.pt
Rua Dr Joaquim Pires de Lima, 373. 4200-348, Porto.
AMI 20078

¹ (Call to national fixed network) | ² (Call to national mobile network)



Residential, commercial or tourist investment

Real estate in the region has appreciated consistently, driven by growing demand and ongoing urban development projects, namely the Campanhã Sports Complex, which will bring even more dynamism to the area. These buildings can be adapted for various purposes, from housing to commercial or tourist spaces.

Strategic location

Offering easy access to Porto city centre and other regions, with its proximity to the train station, Metro, Intermodal Terminal, Freixo Bridge and VCI, residents and visitors have excellent transport connections at their disposal, not only to other parts of the city, but also to national and international destinations.

Strategic Location

Offering easy access to Porto city centre and other regions, with its proximity to the train station, Metro, Intermodal Terminal, Freixo Bridge and VCI, residents and visitors have excellent transport connections at their disposal, not only to other parts of the city, but also to national and international destinations.

Infrastructures and Services

The parish also has a wide range of infrastructures and services, such as schools, health centres, shops, restaurants and leisure facilities.

Possibility for commercial premises

Campanhã is not just a residential spot, it's also a growing commercial centre. Adapting these buildings to house offices, shops or restaurants can be an excellent way to generate a steady income. The strategic location guarantees a constant flow of potential clients and business.

Possibility for tourism

Porto is a city increasingly sought after by tourists. Campanhã's proximity to the historic centre and the main tourist attractions makes it an attractive location for the development of tourism projects, such as BOUTIQUE HOTELS or local accommodation.

If you are a visionary and are looking for a safe, long-term investment, these buildings are one of the best options in the city. Acquiring these properties in this parish, with a strategic vision and careful planning, could be the first step towards a successful business.

Get in touch and book your visit now! Let's build the future together!



Administrador

913587295 ²

geral@homeprivilege.pt

T +351 913 587 295 ² · E geral@homeprivilege.pt
Rua Dr Joaquim Pires de Lima, 373. 4200-348, Porto.
AMI 20078

¹ (Call to national fixed network) | ² (Call to national mobile network)



Property Features

- Metro
- Estação Ferroviária
- Basement
- Central location
- Solar orientation: North, South
- Balcony
- Proximity: Airport, Mountain, Beach, Shopping, Restaurants, City, Open field, Hospital, Pharmacy, Public Transport, Schools, Public Swimming Pools, Playground
- Floors: 4
- Views: City view
- Energetic certification: F
- Mains water



Administrador

913587295 ²

geral@homeprivilege.pt

T +351 913 587 295 ² · E geral@homeprivilege.pt
Rua Dr Joaquim Pires de Lima, 373. 4200-348, Porto.
AMI 20078

¹ (Call to national fixed network) | ² (Call to national mobile network)